



INSTRUCTION BULLETIN

No. 9010966
Machine: T12
Published: 06-2015
Rev. 00

NOTE: DO NOT DISCARD the Parts List from the Instruction Bulletin. Place the Parts List in the appropriate place in the machine manual for future reference. Retaining the Parts List will make it easier to reorder individual parts and will save the cost of ordering an entire kit.

NOTE: Numbers in parenthesis () are reference numbers for parts listed in Bill of Materials.

Installation instructions for **kit number 9010936**

SYNOPSIS:

This kit contains the parts needed to replace the spray nozzle hose on T12 scrubbers.
Please follow step-by-step instructions.

SPECIAL TOOLS / CONSIDERATIONS: NONE

(Estimated time to complete: 1 hour)



PROTECT THE ENVIRONMENT

Please dispose of packaging materials, used machine components such as batteries and fluids in an environmentally safe way according to local waste disposal regulations.

Always remember to recycle.

PREPARATION:

1. Completely empty the solution tank and the recovery tank. Refer to the Operators Manual for instructions how to empty both tanks.
2. Park the machine on a clean level surface, turn off the machine, and remove the key.

FOR SAFETY: Before leaving or servicing machine, stop on level surface, turn off machine, and remove key.

3. Remove the vacuum fan access cover from the machine. Set the vacuum fan access cover and hardware aside. (Fig. 1)
4. Disconnect the solution supply hose from the spray nozzle assembly. Set the hose clamp aside. (Fig. 1)
5. Remove the spray nozzle assembly from the machine. Set all hardware aside. . (Fig. 1)

6. Remove the spray nozzle and fittings from the hose and allow hose to unwind from the spray nozzle assembly. Set the spray nozzle and both fittings aside. (Fig. 1)

NOTE: The loosening spring tension may cause the hose to unwind quickly from the spray nozzle assembly. Allow the spring tension to loosen and hose to unwind before handling the spray hose assembly.

7. Remove the spray hose from the spray nozzle assembly. Set the p- clamp, hose clamp, and hardware aside. Discard the spray hose. (Fig. 1)

INSTALLATION:

1. Connect the spray hose (1) to the spray nozzle assembly. (Fig. 1)
2. Use p- clamp to secure the spray hose (1) to the hose reel. (Fig. 1)
3. Wrap the spray hose (1) evenly onto the hose reel. (Fig. 1)

Note: Only disassemble parts labeled to be disassembled. The spray hose assembly does not need to be completely disassembled to replace spray hose (1). Exploded view used to better show part locations.

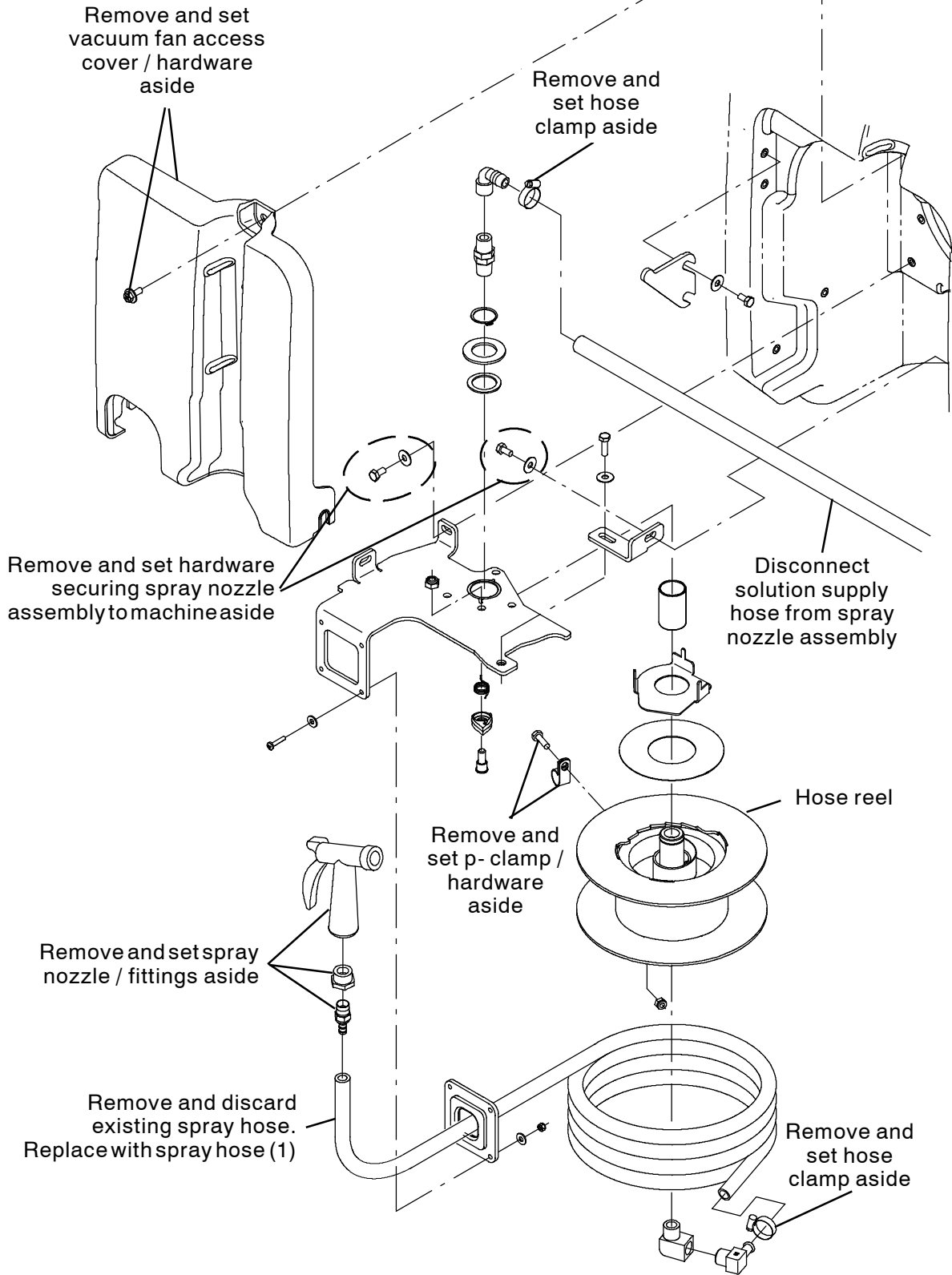


FIG. 1

4. Pull the spray hose (1) out from the spray hose assembly until the reel assembly has turned at least four revolutions, adding tension to the spring. (Fig. 1)
5. Wrap the portion of spray hose (1) pulled from the spray hose assembly back onto the reel. (Fig. 1)
6. Install the spray nozzle and fittings onto the spray hose (1). (Fig. 1)
7. Reinstall the spray hose assembly into the machine. (Fig. 1)
8. Reconnect the solution supply hose to the spray nozzle assembly. (Fig. 1)
9. Reinstall the vacuum fan access cover onto the machine. (Fig. 1)
10. Test the machine. Fill the solution tank. Operate the spray nozzle to ensure it functions. Observe the area around the spray nozzle assembly for leaks. Refer to the Operators Manual for instructions how to use the spray nozzle.

Bill Of Materials For Hose, Spray, Afmkt [T12] - 9010936

Ref.	Tennant Part No.	Description	Qty.
1	1061087	Hose, Rbr, 0.38id, Bulk, Blk [Push- Lok]	1

TENNANT COMPANY
P. O. Box 1452
Minneapolis, MN 55440-1452